



# ROCK AT THE CASTLE

**SUNDAY 7TH AUGUST 2022      12.30PM - 7PM**

# PROGRAMME

The line-up & details of the event are subject to change

SUPPORTING:



ORGANISED BY:



HEADLINE SPONSOR:



ASSOCIATE SPONSORS:







> < Pinch Points

● Gate Numbers


 Emergency Exit

 Stages

 Control Tent

 Herts Boat Rescue

 Crime Prevention Stand

 St John Ambulance



# ROCK AT THE CASTLE

## MAIN STAGE

12.30 - 1.00

**Neil Gowans & The Winos**

1.20 - 1.50

**Wasted Rhymes**

2.00 - 2.10

**Mayor of Hertford Speech**

2.10 - 2.40

**Lucy-May**

3.00 - 3.30

**Soul Revue**

3.50 - 4.20

**Sofasonic**

4.40 - 5.10

**Eponine**

5.30 - 6.00

**Lyra**

6.20 - 7.00

**The Astons**

All bands and stage times are correct at the time of printing.  
Please check the website for further details: [www.hertford.gov.uk](http://www.hertford.gov.uk)



# ROCK AT THE CASTLE

## GARDEN STAGE

12.35 - 12.55

**The Rolling Moss**

1.05 - 1.25

**Geoff Carne**

1.35 - 1.55

**Alefia Upstairs**

2.05 - 2.25

**Paul Booth**

2.35 - 2.55

**Orchard**

3.05 - 3.25

**Dear Wife**

3.35 - 4.10

**Adam Fearn**

4.35 - 4.55

**Why Not**

5.05 - 5.25

**R.N.R**

5.35 - 5.55

**Rob Powell**

## ISLAND STAGE

12.35 - 12.55

**Tracy Lee Norman**

1.05 - 1.25

**Dominic Kaye**

1.35 - 1.55

**Dan Thomas**

2.05 - 2.25

**Wudi & The Ice Creams**

2.35 - 2.55

**Jenny Salmon**

3.05 - 3.25

**George Croucher**

3.35 - 3.55

**Marshland Pete**

4.05 - 4.25

**Immi Davis**

4.35 - 4.55

**Grace Whitford**

5.05 - 5.25

**Chris Sims**

5.35 - 5.55

**Cedar Rose Johnson**

All bands and stage times are correct at the time of printing.  
Please check the website for further details: [www.hertford.gov.uk](http://www.hertford.gov.uk)





# HERTFORD BORN AND BREWED SINCE 1827

INVESTMENT | EMPLOYMENT | FUN



[MCMULLENS.CO.UK](http://MCMULLENS.CO.UK)  
[MCMULLENSCAREERS.CO.UK](http://MCMULLENSCAREERS.CO.UK)



# ROCK AT THE CASTLE

## MAIN STAGE



### Neil Gowans & The Winos

Neil Gowans & The Winos are mostly a three-piece, sometimes four-piece, power pop 'n' roll band. They play tuneful, upbeat rock 'n' roll full of twanging romanticism, a soupcon of soul and a generous dollop of new wave attitude. Influences include Nick Lowe, Johnny Cash, Teenage Fanclub, The Clash, Buddy Holly, Bob Dylan, Edwyn Collins, Elvis and a smidgeon of Northern Soul.



### Wasted Rhymes

Wasted Rhymes play an energy fuelled contemporary Alt rock / indie set of their own material, with some carefully chosen and re-worked covers in their own style. Having supported Big Country, The Blow Monkeys, China Crisis, Los pac featuring Paul Young, Wasted Rhymes continue to write, perform and play into 2022.



### Lucy-May

Lucy-May is a singer/songwriter from London. Brought up on the 60's Motown and Pop music, her vocals are a blend of classic Rhythm and Blues with a modern country take. Her unique style and edgy, retro look puts her in a class all her own.



### Soul Revue

Stone cold soul classics played with skill, authenticity and class. Some of the finest musicians around have joined forces to recreate some of the greatest records ever made.

All bands and stage times are correct at the time of printing. Please check the website for further details: [www.hertford.gov.uk](http://www.hertford.gov.uk)



# ROCK AT THE CASTLE

## MAIN STAGE



### Sofasonic

Sofasonic are a bluesy, riff-based rock band throwing out catchy melodies sitting over toe-tapping licks! Main influences include Royal Blood, Band of Skulls, Queens of the Stone Age and Deaf Havana. Together since 2013, they released their debut album 'Get Made' in 2017 and have been lucky enough to support the Spin Doctors, and most recently The Picturebooks. Perhaps their biggest achievement so far has been the 'Get Made' European Tour, which they're repeating in 2023 with album number two.



### Eponine

Led by an instantly recognisable vocal tone, Eponine could be best described as "grungy soul" or "postmodern RnB" with a lyricism that poetically tows the line between esoteric and conversational. Lead singer Geoff is now releasing acoustic versions of new material. The end of October 2021 saw the acoustic release of the 'Love Gun' E.P. followed in early spring of 2022 with the 'Raw Rox Band' version. Next up will be the 'Rock the Blues' E.P.



### Lyra

Lyra are an infectious neo soul/RnB act. Drawing inspiration from 90's RnB culture to modern day funk and pop the band take influence from artists including Michael Jackson, Stevie Wonder, Don Broco, Polyphia, Tom Misch, Cory Wong and Amy Winehouse. Since forming in 2016, Lyra have performed in some of the most iconic venues in London and their songs have received numerous plays on 'BBC Introducing' in addition to track of the week.



### The Astons

Playing together as a band for over 20 years, travelling from New York to Sydney and everywhere in between! The Astons have played with names including David Bowie, Chaz Hodges, Emma Thompson and even for a brief and very strange time...Chico!

All bands and stage times are correct at the time of printing. Please check the website for further details: [www.hertford.gov.uk](http://www.hertford.gov.uk)



**Raising funds for projects above and beyond the remit of the NHS to enhance patient care and experience to help our NHS Trust to reach its objective of being among the best healthcare providers in the country.**

**The funds raised at Rock at the Castle will help enhance the care given to children being treated at Hertford County Hospital. A refurbished garden will provide a space for the children and their parents to take some time out to relax and unwind and sensory toys will help calm children who can often be anxious in a hospital environment.**

**Your donations at the Castle entrance points are greatly received  
- Thank you -**



# ROCK AT THE CASTLE

## GARDEN STAGE



### The Rolling Moss

Boogie down with acoustic versions of well loved classics from the 60s and 70s.



### Orchard

Orchard is a trio acoustic format of the band 'Paisley Underground'. Clare Gray on vocals is a highly experienced jazz, blues and folk singer. Diana Stone plays violin, piano and guitar and Brian Kelly plays guitar and vocals with fifty years of playing country, rock, blues, jazz, contemporary Christian and Folk music in both electric and acoustic settings



### Geoff Carne

Early influences from his teens came from the England's North-East in the form of Paul Rodgers Free/Bad Company and the early David Coverdale's Whitesnake. Following a number of years as a songwriter/performer across various music genre's Geoff returned to his British Rock roots (with a Blues influence) in 2014 with the release of his solo 'One to One' Album.



### Dear Wife

Dear Wife is the solo project of songwriter and poet Louise Essex, from Hertford. Her folk sound pairs evocative, story-like lyrics with acoustic guitar. In 2021, Dear Wife was commissioned by Beatfreaks to write and produce a new song, resulting in 'Holy Mother'. Her vocals feature on Delmer Darion's debut album 'Morning Pageants' (2020). She has recently supported Molly Linen on tour and is currently working on her debut EP.



### Aletia Upstairs

Aletia Upstairs hails from South Africa and has been a Hertford resident for almost two years. She will be playing songs from her EP 'The Artist as Explorer', released in 2018. She has composed and produced 4 solo albums and regularly performs at Camden Cabaret in London. Her current show 'Songs My Lovers Didn't Understand' was performed at the Worcester Fringe Festival in July.



### Adam Fearn

Adam Fearn is a singer-songwriter/guitarist with a strong passion for folk/rock music. He brings energetic and uplifting attitude to the forefront for all to hear. Adam is also no stranger to the promotion game. He has built an increasing presence through an initiative called 'I AM THE MUSIC collective'; a platform that has helped to nurture his own talent and passion for music, as well as developing the potential of other artists.

All bands and stage times are correct at the time of printing. Please check the website for further details: [www.hertford.gov.uk](http://www.hertford.gov.uk)



# ROCK AT THE CASTLE

## GARDEN STAGE



### Paul Booth

Active on the East/North Herts music scene for over a decade, Paul Booth is an exciting singer-songwriter guitarist who thrives on live performance. His self-penned songs are an eclectic mix of indie, pop, roots, folk, country, switching from upbeat dance numbers to finger-picking ballads. Si Lee adds musical depth with his inventive bass guitar work.



### R.N.R

RNR presents a pleasing acoustic trio of seasoned musician friends who decided to band up and play some original songs together. The trio has evolved from the Hertford music scene, where they've been playing solo or with a range of different acts over many a long moon. R is Rob Clydesdale, the N is Nuala O'Halpin, both singer-songwriters of quality and repute, another R is Richard Hurst with percussion: RNR hope you will enjoy.



### Rob Powell

Singer/songwriter with influences ranging from Bob Dylan, Richard Ashcroft and John Lennon, Rob Powell was the former lead singer of Cinemawave, a band that received airplay across BBC London Radio, Soccer AM and played 150+ gigs/festivals across the country including Standon Calling, The Cavern and O2 Sheperds Bush Empire.



### Why Not

Why Not are an acoustic duo who play an upbeat and varied set of covers through different genres from pop to folk to country and in their own style.

All bands and stage times are correct at the time of printing.  
Please check the website for further details: [www.hertford.gov.uk](http://www.hertford.gov.uk)





# YOU CAN COUNT ON US EVERY STEP OF THE WAY

## AREAS OF LAW

COMMERCIAL PROPERTY

COMPANY & COMMERCIAL

DISPUTE RESOLUTION

EMPLOYMENT LAW

FAMILY LAW

LASTING POWERS OF ATTORNEY

LITIGATION

NEW HOMES

PERSONAL INJURY

RESIDENTIAL CONVEYANCING

TOWN & COUNTRY PLANNING

**56 HIGH STREET HODDESDON  
HERTFORDSHIRE EN11 8EX**

[www.duffieldharrison.co.uk](http://www.duffieldharrison.co.uk)

HODDESDON 01992 442 911

HERTFORD 01992 587 065 | ENFIELD 020 8804 5271





# ROCK AT THE CASTLE

## ISLAND STAGE



### Tracy Lee Norman

Tracy Lee Norman is a vocalist and songwriter from Cape Town, South Africa. A regular on the local folk scene, and a three time finalist of the Barleycorn Songwriters' Competition, Tracy released her debut EP 'Life As I Knew It' in 2019. Tracy performs regularly in London both as a solo artist and alongside her six-piece band.



### Dominic Kaye

Dominic Kaye is proud to present his tribute to UB40 and the biggest Reggae and SKA hits. This fantastic tribute has songs that are guaranteed to have audiences singing along and dancing from beginning to end. Dominic's show was nominated for the National Tribute Music Awards 2018 and 2019, which means that you are sure to get a show of the highest standard.



### Dan Thomas

Singer-Songwriter with an Alt-Rock twist! Believing in the beauty of simplicity, Dan is a songwriter who likes to show people that anyone can write and play music. Combining simple songwriting with a powerful vocal performance, Dan believes "if you have a good ear for a melody and something to say, then you can write songs".



### Wudi & The Ice Creams

Wudi has been making music ever since he stole his mate's guitar at the tender age of 14. Since then he's been steadily writing and self-releasing songs to not-yet-acclaim but something (hopefully) nearing it. His music has been categorised as many things, but Wudi prefers to call it "Beer Pop" as he believes his songs, much like beer, are there to give people a bit of a breather and bring some happiness into their busy lives. Listen, have a drink, dance a little and have a good time!



### Jenny Salmon

Jenny Salmon has been a professional musician for 30 years. She has performed in a variety of venues across the UK, Spain, Australia and New Zealand. Jenny is a vocalist and guitarist, and performs a wide range of musical genres from soft rock to pop and everything in between. She released her first solo album during the lockdown of 2020 called 'This Time' and is very much enjoying being back on the road again.



### George Croucher

George Croucher is a singer songwriter specialising in passionate vocal-guitar combinations mixing synth and beats in support, evoking for you the James-Arthur-and-Shawn-Mendes sonic sphere.

All bands and stage times are correct at the time of printing. Please check the website for further details: [www.hertford.gov.uk](http://www.hertford.gov.uk)



# ROCK AT THE CASTLE

## ISLAND STAGE



### Marshland Pete

Marshland Pete is a Blues/Rock artist who sounds like Gary Clark Jr, Jeff Beck and The Black Keys meeting in an abandoned rural pub for a jam. His guitar based music is a bridge between early Blues Roots, British Blues Rock and Modern Raw Electric Blues Rock.



### Immi Davis

Immi is 9 years old and loves to sing. She has been singing since she was 3 years old and began daily singing practice when she was 5. Immi is the LB Westminster's youngest licensed busker. Recently Immi appeared on Britain's Got Talent and was over the moon to reach the semi-finals. Immi would love you to follow her journey, she's hoping it'll be a blast. Immi is very excited to be here today!



### Grace Whitford

Grace Whitford is a singer, songwriter, pianist from Hoddesdon. Her Indie Pop songs come straight from the heart and are intertwined with smoky covers.



### Chris Sims

Hertford based musician, Chris released his debut single 'Rather Lay Down With Lions' which was followed up by his EP 'Alibi'. Chris has performed alongside artists including Fatherson, Billy Bibby, Blackfoot Circle, Lake Komo and more.



### Cedar Rose Johnson

Hertford-born singer-songwriter, Cedar Rose Johnson, has been performing since the age of 4 and has written and produced songs for films. She is currently working the circuits, performing her original songs and her favourite covers at a range of live events this summer. This year, Cedar hit a milestone when some of her original tracks, including Can't Handle It and My Open Heart were played on BBC Radio. Since then, Cedar has been played weekly on international radio stations where she was interviewed about her new release Hopeless Kind Of Love.



# J&C

JOHNSON & CO.

Premium property consultancy

---

Assisting all real estate needs  
Designed with you in mind

Residential • Land & New Homes  
Off Market Properties • Lettings

01992 364005

[johnsonandcoestates.co.uk](http://johnsonandcoestates.co.uk)

[sales@johnsonandcoestates.co.uk](mailto:sales@johnsonandcoestates.co.uk) 114-116 Fore Street, Hertford, SG14 1AJ





**IN LOVING MEMORY OF**



**ROB MUIR**

**27 JUNE 1957 - 7 DECEMBER 2019**



# **REMEMBERING ROB MUIR**

**It's great to be back with the first full-on Rock at the Castle after the pandemic with what should have been the 17th since we started it in 2006 (I think). Today, though, for me and many of you who've been coming since those prehistoric days, there's a still a big Rob Muir-shaped hole here.**

**For those who didn't know him, Rob was an unstoppable (or so we all thought) human dynamo... Strong as an ox, sometimes soppy, sometimes stropky, he didn't just provide PA systems. On a technical level he was exceptional. More importantly, he understood what artists need and how their music should sound – and he knew what really counts. I still repeat Rob's wise words to engineers I work with: 'You're not working for the venue or the promoter or the council... You're working for the artists on stage. It's your job to make them sound as great as they possibly can be'.**

**Every time I asked Rob to help me out with a PA, whether for my band, for the venue that became Hertford Marquee or for this new local charity thing called Rock at the Castle, he turned up with ten times what I asked for at a fraction of the realistic cost.**

**For almost 15 years Rob and his team made sure the Castle rocked and did so with humour, withering wit and a lot of long-learnt, yet off-the-cuff expertise – initially only covering costs. It's not as if he needed a local gig – he often rocked up sleepless and grouchy straight from a far bigger one – for the likes of Joe Strummer and the Mescaleros, The Trojans, Notting Hill Carnival, Mutoid Waste at Fuji Rock, Japan, some little festival called Glastonbury, political demos for the SWP and countless other events at cost or less for churches, special schools and other charities.**

**In short, Rob did all this because he believed in fairness, in equality and communities. That's why he made such a difference to so many people's lives. So while you enjoy today's show please make some special noise in honour of Rob McLeod Muir and make him giggle in Rock 'n' Roll Heaven.**

**Keep on keeping on! Love and noise,**

**Kev Saunders**



# ROCK AT THE CASTLE

# INFORMATION

## Emergency Evacuation Procedure

In the event of an emergency, please follow instructions given over the PA system and by the Stewards and Security staff on duty.

### Restrictions

NO Glass allowed on site

NO BBQs are permitted in the grounds of Hertford Castle

NO Gazebo's

NO Underage Drinking

NO Cycling / Skateboarding

NO Ball games

DOGS: Under the Dangerous Dog Act, dogs should be kept on a lead and under control

### Toilets

Located close to the pathways at either side of the lawn.

### First Aid Point

St John's Ambulance will be on site alongside the riverbank.

### Lost/Found Children & Vulnerable Adults Point

Please take lost children to the St John's Ambulance tent alongside the riverbank.

### Bar

Licensed Bar will be serving beer and wine from 12.30pm and last orders will be at 6.45pm.

Please note, there will be a queuing system and no alcohol purchased at the bar will be allowed out of the grounds.

## PLEASE NOTE THERE IS NO PARKING AT HERTFORD CASTLE;

please use nearby car parks which are FREE on Sunday (check closing times & terms of car parks)

Anyone deemed to be causing a nuisance may be asked to leave the area by police, security or stewards acting on behalf of Hertford Town Council.

Any verbal or physical abuse in relation to this will not be tolerated.

**Visitors are limited to bringing no more than four cans of beer/cider/pre-mixed drinks or one bottle of wine (750ml max) on entry per person into the premises before 4pm.**

Bottled wine will need to be decanted on entry.

No glass will be allowed on site.

There will be a bag search in operation at all entrance points.

## THANK YOU FOR SUPPORTING ROCK AT THE CASTLE

ROCK AT THE CASTLE is organised and funded by HERTFORD TOWN COUNCIL but would not be possible without the support and commitment from Kev Saunders and our sponsors: McMullen's Brewery, Duffield Harrison Solicitors and Johnson & Co.

Although, Rock at the Castle is a free event to attend, this year's selected charity, East and North Hertfordshire Hospitals, will be fundraising on the gates. Your donations at the Castle entrance points are greatly received.

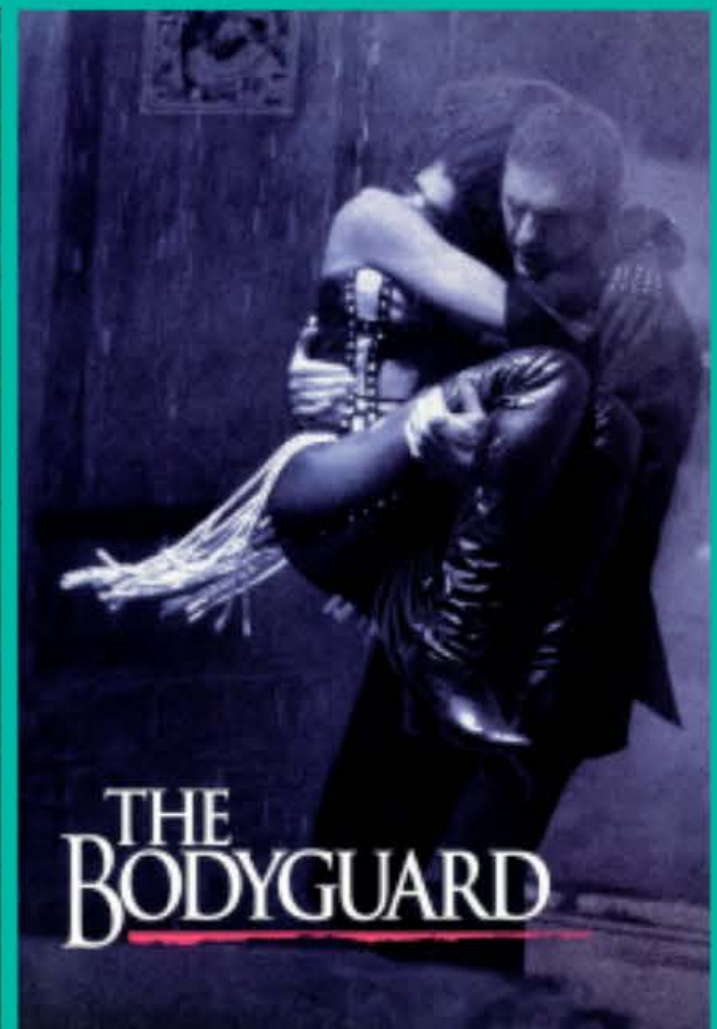
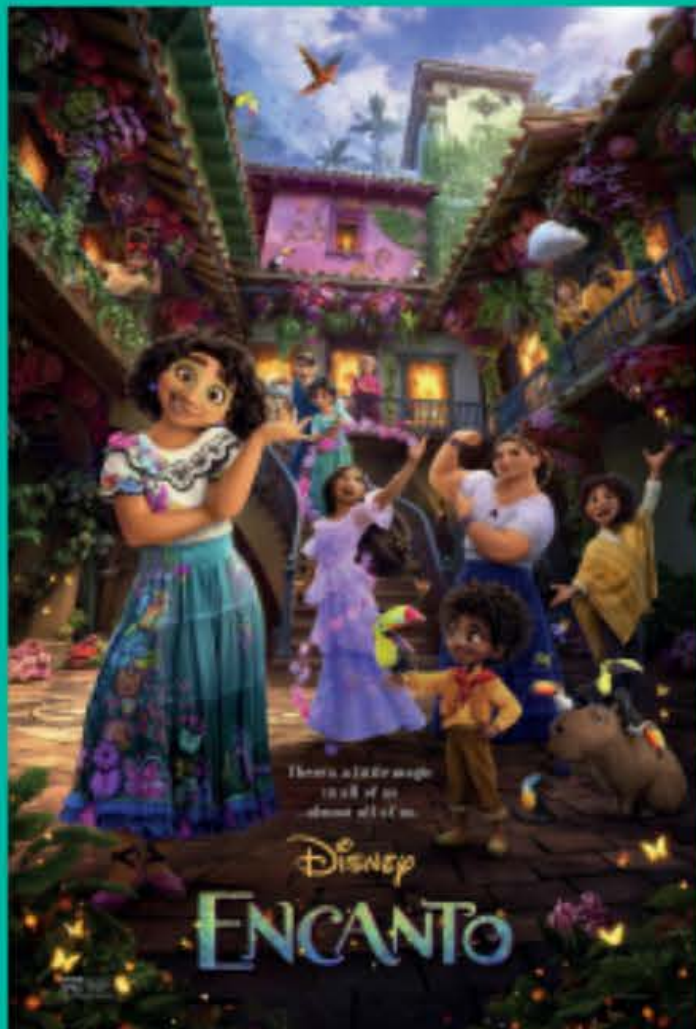
Hertford Town Council gives special thanks to:  
The Musicians and their supporters  
Kev Saunders – Music Co-ordinator  
McMullen's Brewery – Headline Sponsors  
Duffield Harrison Solicitor - Associate Sponsors  
Johnson & Co - Associate Sponsors  
Apollo Audio - For supplying one set of backline  
Hertfordshire Constabulary  
Hertfordshire Boat Rescue  
St John Ambulance  
All Volunteers  
Main Stage MC - Kev Saunders  
Stage Managers Alex Duncan & Kerry Watson



Hertford  
Castle

# OPEN AIRCINEMA

## Friday 19th August



10AM

2PM

7PM

Available online at [hertford.gov.uk/events](https://hertford.gov.uk/events) or at  
the Town & Tourist Information Centre 01992 584 322



HERTFORD TOWN COUNCIL

Media Partners

shystudios

Event Sponsors

**DURKAN**



**THANK YOU  
FOR SUPPORTING**

**ROCK AT THE  
CASTLE**

**AND**

